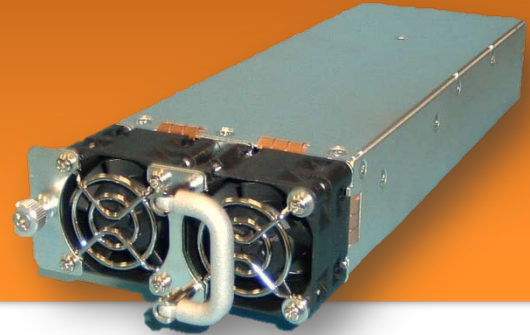


**FEATURES**

**BPA-R850 Series**

- Input Active Power Factor Correction
- Wide Range Input
- POE/Isolated Output (Optional)
- Redundant operation
- Single wire current sharing
- Diode isolation
- Custom modifications available
- CE compliant
- UL, CUL, and DEMKO Approvals
- PC interface (Optional)
- Inhibit
- Power Okay
- PS On



**SPECIFICATION**

Model		BPA-R850 Series
Output	DC Output	Maximum continuous output power 850 Watts with self-contained fan cooling
	Line Regulation	± 0.05%
	Load Regulation	± 1%
	Ripple and Noise	1% Pk to Pk
	Transient Response	2% Maximum deviation; returns to initial condition in 1 msec max.
	Long Term Stability	0.01% after 20 minute warm-up
	Hold-Up Time	20msec minimum
	OVP	115% to 135% on VO1 output only.
	Short-circuit Protection	Constant current with delayed latching method on VO1 output. The 5VSB utilizes the hiccup method.
	Overload Protection	Constant current with delayed latching method on VO1 output. The 5VSB utilizes the hiccup method. The constant current method allows for a 5-second delay before the power supply shuts down if the output current rating exceeds 110% to 130% of maximum rated output current. The AC must be recycled or the PS ON reset to restart the unit.
	Diode Isolation	Internal FET isolation provided for N+1 redundant operation.
	Current Sharing	VO1 Output will current share within 5% when interconnected by a single wire.
	PS ON	The secondary outputs are enabled only upon mating pin P1-7 to output common on the customer's backplane.
	Over Temperature Protection	The power supply will shut down if temperature is greater than 100°C internal temperature. The power supply is self-recovering once the internal temperature falls below 60°C.
	Power Okay	A TTL high logic signal is provided on pin P1-10 when the input and output voltages are within normal operating conditions.
Inhibit	A TTL low logic signal sent to pin P1-11 inhibits all outputs except the 5VSB. Upon release of the signal, outputs are restored	
PC	Monitors: Power Good, Voltage, Current, Temperature, and Fan	
Input	Input Range	90-264 VAC
	Frequency Range	47-63 Hz
	EMI filter	EN55022 Class A, FCC Part 15
	Inrush Current	<32A @ 230 VAC
	Input Current	11.8A – 3.8A
	Isolation (Input to Output)	4242 VDC
	Efficiency	88% @ 120 VAC
	Active PFC	0.99
	Switching Frequency	134KHz
	Leakage	< 1mA
Environmental	Humidity	Up to 95% non-condensing
	Storage Temperature	-20° to +85°C
	Temperature coefficient	± 0.01% / °C
	Ambient Operating Temperature	0 to +50°C continuous duty, full rating. Derates linearly to 70% of full rating at +70°C
	Cooling	Self-contained fan cooling
Safety	UL / CUL / DEMKO	60950-1 / 60950-1 / EN60950-1
Others	Connector Input / Output	Positronic PCIM30W15M400A1
	OR Connector Input / Output (POE)	Positronic PCIB24W9M400A1/AA
	Dimension (L*W*H)	10.48" L x 3.23" W x 1.55" H (266.3mm x 82mm x 39.4mm)



**VOLTAGE/CURRENT RATING CHART**

Sample Part Number	Assignment	Voltage	Minimum	Maximum
BPA-R850-xxxA	VO1	12V-58V	0A	850W
	5VSB	+5V	0A	2.0A

<b>Total Power</b>	850 Watts
<b>Input Voltages</b>	90-264 VAC
<b>Outputs</b>	Single plus 5VSB

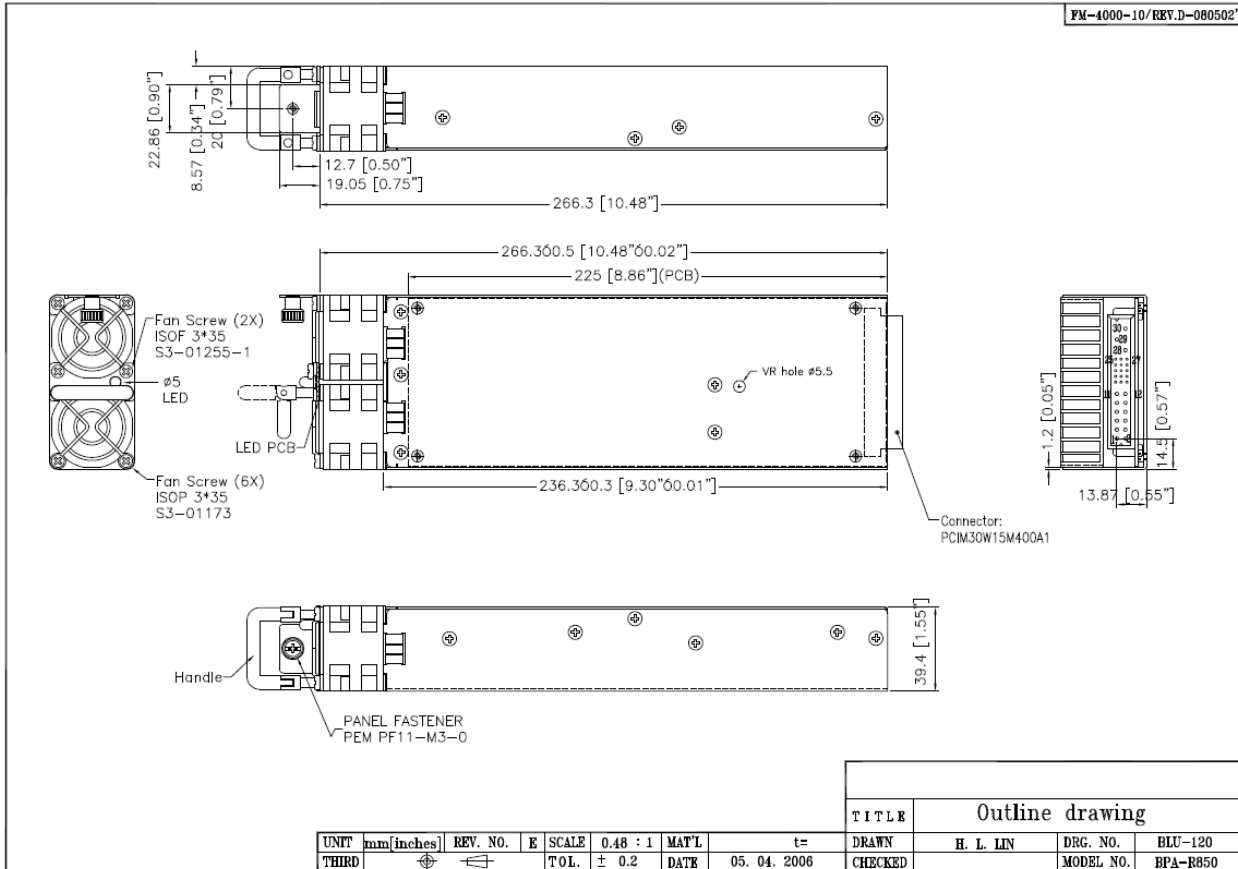
**Notes:**

- Specifications subject to change without notice.
- All dimensions in inches/mm
- Warranty: 2 years
- Weight: 3 lbs





FM-4000-10/REV.D-080502'



MODEL NO. : BPA-R850 Series LF

INPUTS :

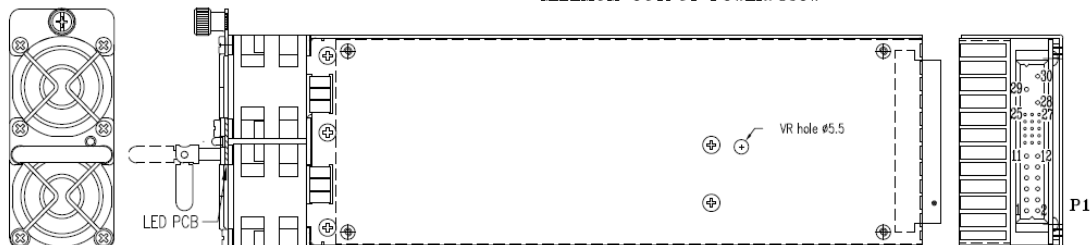
ASSIGNMENT	A.C. VOLTAGE	CURRENT	PIN NBR
L:	100-240V~	11.8A	P1-30
N:			P1-29
GND:		50-60Hz	P1-28

IN/OUTPUT RATING & PIN ASSIGNMENT

OUTPUTS :

ASSIGNMENT	D.C. VOLTAGE	CURRENT	PIN NBR
VO1:	See Voltage/Current Rating Chart		P1-1,2,3,4,5,6
DC COM:			P1-7,8,9,10,11,12
+12VS:			P1-19
5VSB:	+5V ---	2A	P1-13,14
INH:			P1-24
TEMP:			P1-20
PS ON:			P1-21
SDL:			P1-17
SDA:			P1-16
DC COM:			P1-18
P. OK:			P1-15
-VO1VS:			P1-22
+VO1VCS:			P1-23
A0:			P1-27
A1:			P1-26
A2:			P1-25

MAXIMUM OUTPUT POWER: 850W



P1 = POSITRONIC PCIM30W15M400A1

