

FEATURES

BPC2250 Chassis

- Input Active Power Factor Correction
- Wide Range Input
- Custom modifications available
- Redundant operation
- Single wire current sharing
- Diode isolation
- Available in Single or Three Phase Inputs
- CE compliant
- UL, CUL, and DEMKO Approvals
- I²C interface (Optional)
- Inhibit
- Power Okay
- PS On



SPECIFICATION

Model		BPC2250 Chassis
Output	DC Output	Maximum continuous output power 2550 Watts with self-contained fan cooling on each module.
	Line Regulation	± 0.05%
	Load Regulation	± 1%
	Ripple and Noise	1% Pk to Pk
	Transient Response	2% Maximum deviation; returns to initial condition in 1 msec max.
	Long Term Stability	0.01% after 20 minute warm-up
	Hold-Up Time	20msec minimum
	OVP	115% to 135% on VO1 output only.
	Short-circuit Protection	Constant current with delayed latching method on VO1 output. The 5VSB utilizes the hiccup method.
	Overload Protection	Constant current with delayed latching method on VO1 output. The 5VSB utilizes the hiccup method. The constant current method allows for a 5-second delay before the power supply shuts down if the output current rating exceeds 110% to 130% of maximum rated output current. The AC must be recycled or the PS ON reset to restart the unit.
	Diode Isolation	Internal FET isolation provided for N+1 redundant operation.
	Current Sharing	Output will current share within 5% when interconnected by a single wire.
	PS ON	The secondary outputs are enabled only upon mating pin P2-12 to output common on the customer's backplane.
	Over Temperature Protection	The power supply will shut down if temperature is greater than 100°C internal temperature. The power supply is self-recovering once the internal temperature falls below 60°C.
	Power Okay	A TTL high logic signal is provided on pin P2-4 when the input and output voltages are within normal operating conditions.
	Inhibit	A TTL low logic signal sent to pin P2-9 inhibits all outputs except the 5VSB. Upon release of the signal, outputs are restored
I ² C (Optional)	Monitors: Power Good, Voltage, Current, Temperature, and Fan	
Input	Input Range	180-264 VAC Single Phase 380 VAC 3 Phase
	Frequency Range	47-440 Hz
	EMI filter	EN55022 Class B, FCC Part 15
	Inrush Current	<32A @ 230 VAC
	Input Current	14.7A – 10.0A
	Isolation (Input to Output)	4242 VDC (Input to Output)
	Efficiency	85% @ 120 VAC
	Active PFC	0.99
	Switching Frequency	134KHz
	Leakage	< 3.5mA
Environmental	Humidity	Up to 95% non-condensing
	Storage Temperature	-20° to +85°C
	Temperature coefficient	± 0.01% / °C
	Ambient Operating Temperature	0 to +50°C continuous duty, full rating. Derates linearly to 70% of full rating at +71°C
	Cooling	Self-contained fan cooling
Safety	UL / CUL / DEMKO	60950-1 Second Edition / 60950-1 Second Edition / EN60950-1 Second Edition
Others	Connector Input	Terminal Blocks
	Connector DC output	Bus Bars
	Output Connector	Molex 39-31-0120
	Dimension (L*W*H)	11.41" L x 4.0" W x 6.0" H (290mm x 101mm x 152.4mm)



VOLTAGE/CURRENT RATING CHART PER CHASSIS (not all available models shown)

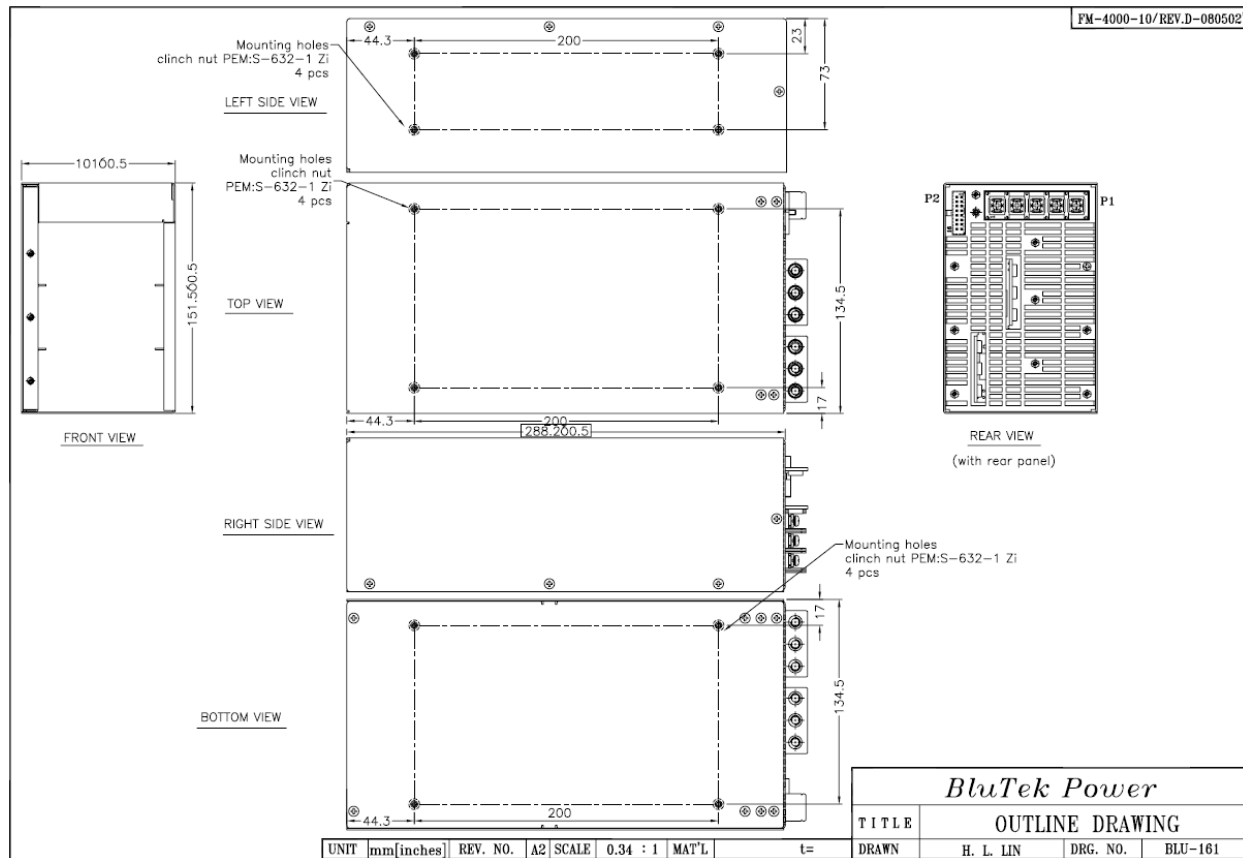
Part Number	Assignment	Voltage	Minimum	Maximum
BPC2250-50-3A	VO1	+5.0V	0A	300.0A
	5VSB	+5V	0A	2.0A
BPC2250-120-3A	VO1	+12V	0A	212.5A
	5VSB	+5V	0A	2.0A
BPC2250-280-3A	VO1	+24V	0A	106.2A
	5VSB	+5V	0A	2.0A
BPC2250-480-3A	VO1	+48V	0A	53.1A
	5VSB	+5V	0A	2.0A
BPC2250-580-3A	VO1	+58V	0A	43.9A
	5VSB	+5V	0A	2.0A

Total Power	2250W (3 units) – 850W modules
Input Voltages	90-264 VAC
Outputs	Single plus 5VSB

Notes:

- Specifications subject to change without notice.
- All dimensions in inches/mm
- Warranty: 2 years
- Weight: 12.5 lbs





300-1 (B3) Rev. 11, 12, 13, 14, 15, 16, 17, 18, 19, 20, 21, 22, 23, 24, 25, 26, 27, 28, 29, 30, 31, 32, 33, 34, 35, 36, 37, 38, 39, 40, 41, 42, 43, 44, 45, 46, 47, 48, 49, 50, 51, 52, 53, 54, 55, 56, 57, 58, 59, 60, 61, 62, 63, 64, 65, 66, 67, 68, 69, 70, 71, 72, 73, 74, 75, 76, 77, 78, 79, 80, 81, 82, 83, 84, 85, 86, 87, 88, 89, 90, 91, 92, 93, 94, 95, 96, 97, 98, 99, 100

MODEL NO. : BPC2250 SERIES

INPUTS :

ASSIGNMENT	A.C. VOLTAGE	CURRENT	PIN NBR
L (3):	100-240V~		P1-5
L (2):			P1-4
L (1):			P1-3
N:			P1-2
GND:		50-60Hz	P1-1

IN/OUTPUT RATING & PIN ASSIGNMENT

SIZE : A4	FM-4000-34/REV.A-080502
UNIT : mm[inches]	FILENAME: PPSC0455
REV. NO.: A	DATE : 10. 18. 2006
DRAWN: ? ?	CHECKED:
H. L. LIN	

OUTPUTS :

ASSIGNMENT	D.C. VOLTAGE	CURRENT	PIN NBR
Vout(+):			Bus bar
Vout(-):			Bus bar
TRACK:			P2-1
INH:			P2-2
-VO1Sense:			P2-3
+VO1Sense:			P2-4
SDA:			P2-5
5VSB:			P2-6, 14
P. OK (1):			P2-7
P. OK (3):			P2-8
VO1Current Sense:			P2-9
TEMP (3):			P2-10
TEMP (1):			P2-11
TEMP (2):			P2-12
SDL:			P2-13
COM:			P2-15
P. OK (2):			P2-16

MAXIMUM OUTPUT POWER: 2550W

P2: molex 43045-1612

P1: DINKLE
DT-7N-B01W-05

